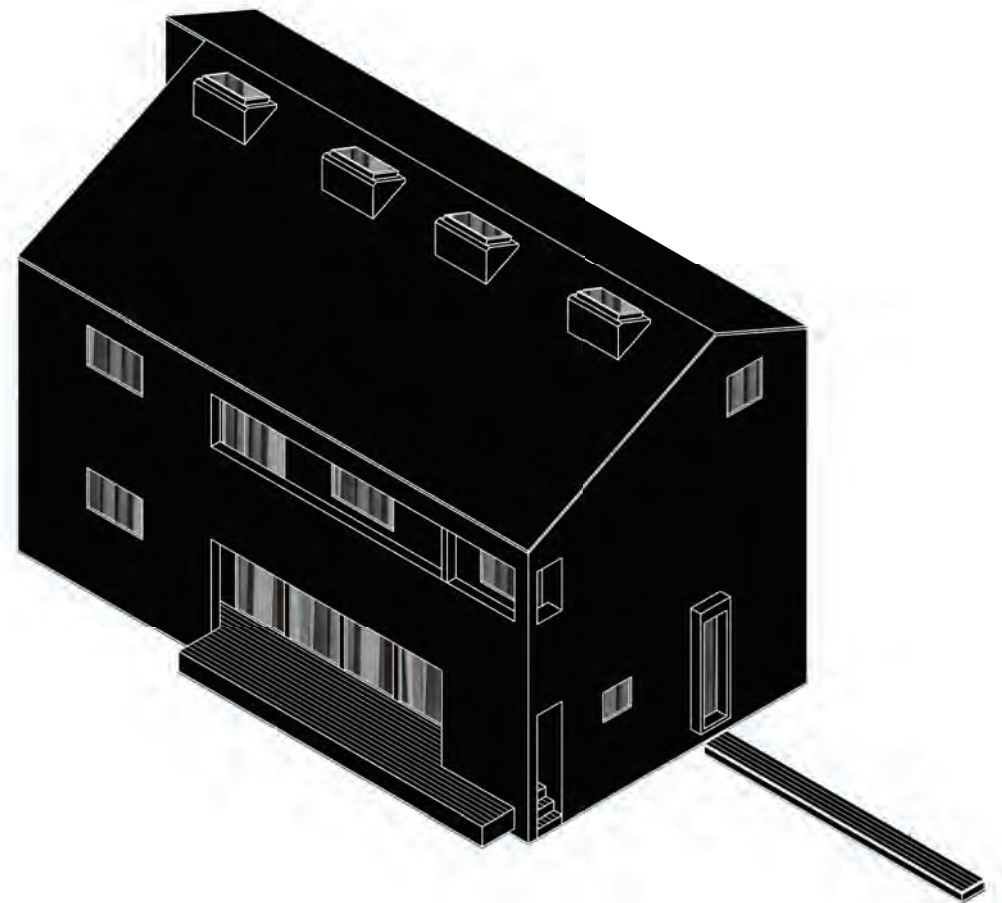


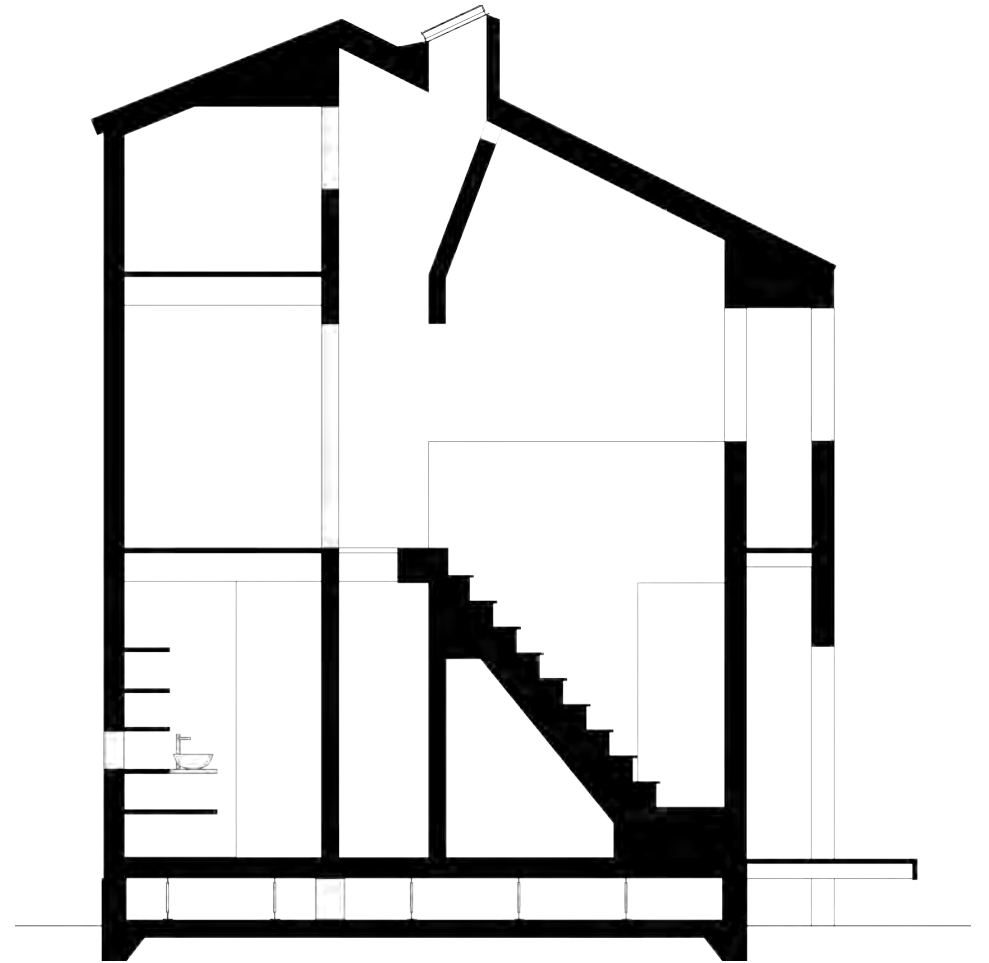
iVY

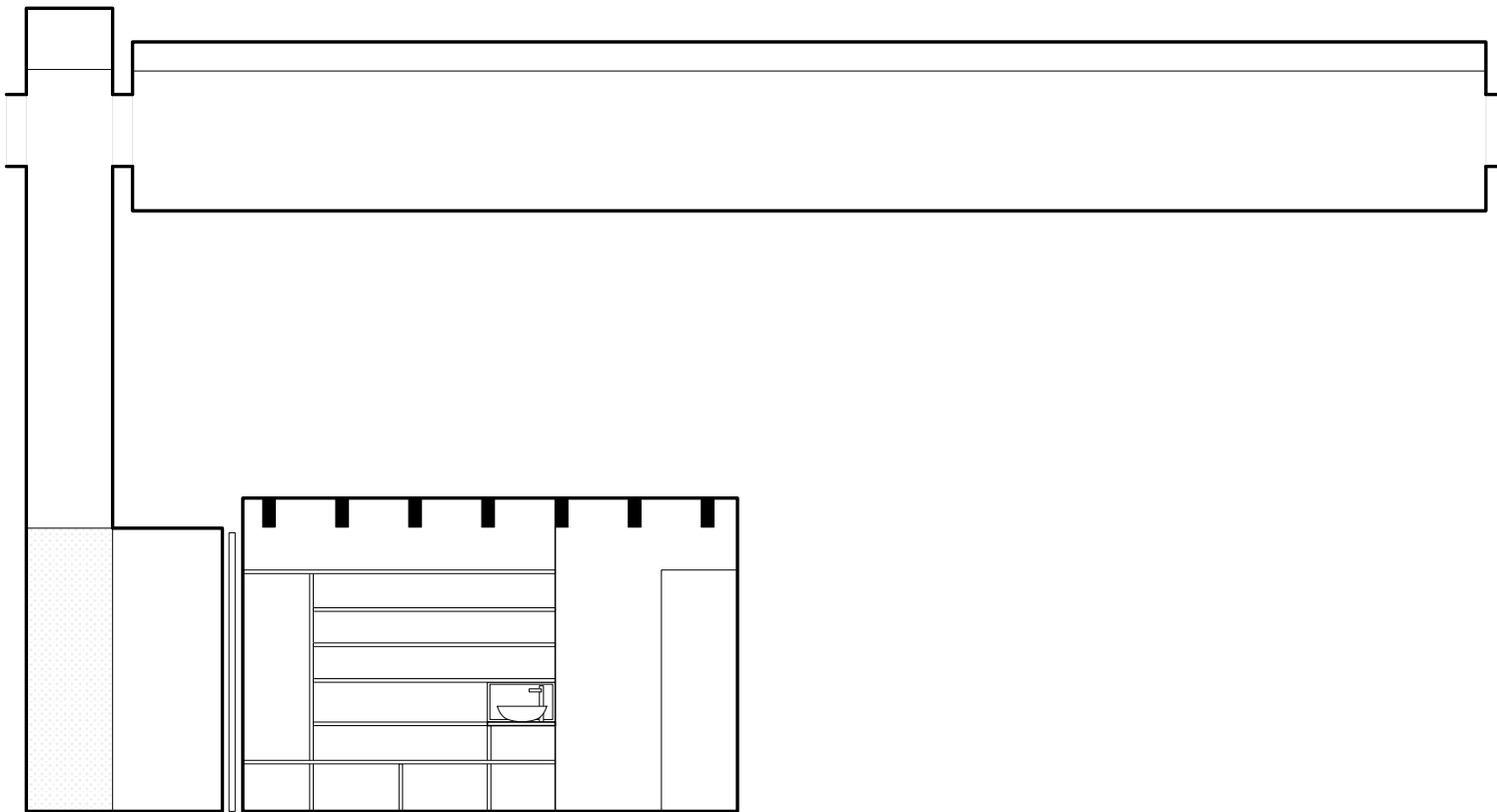


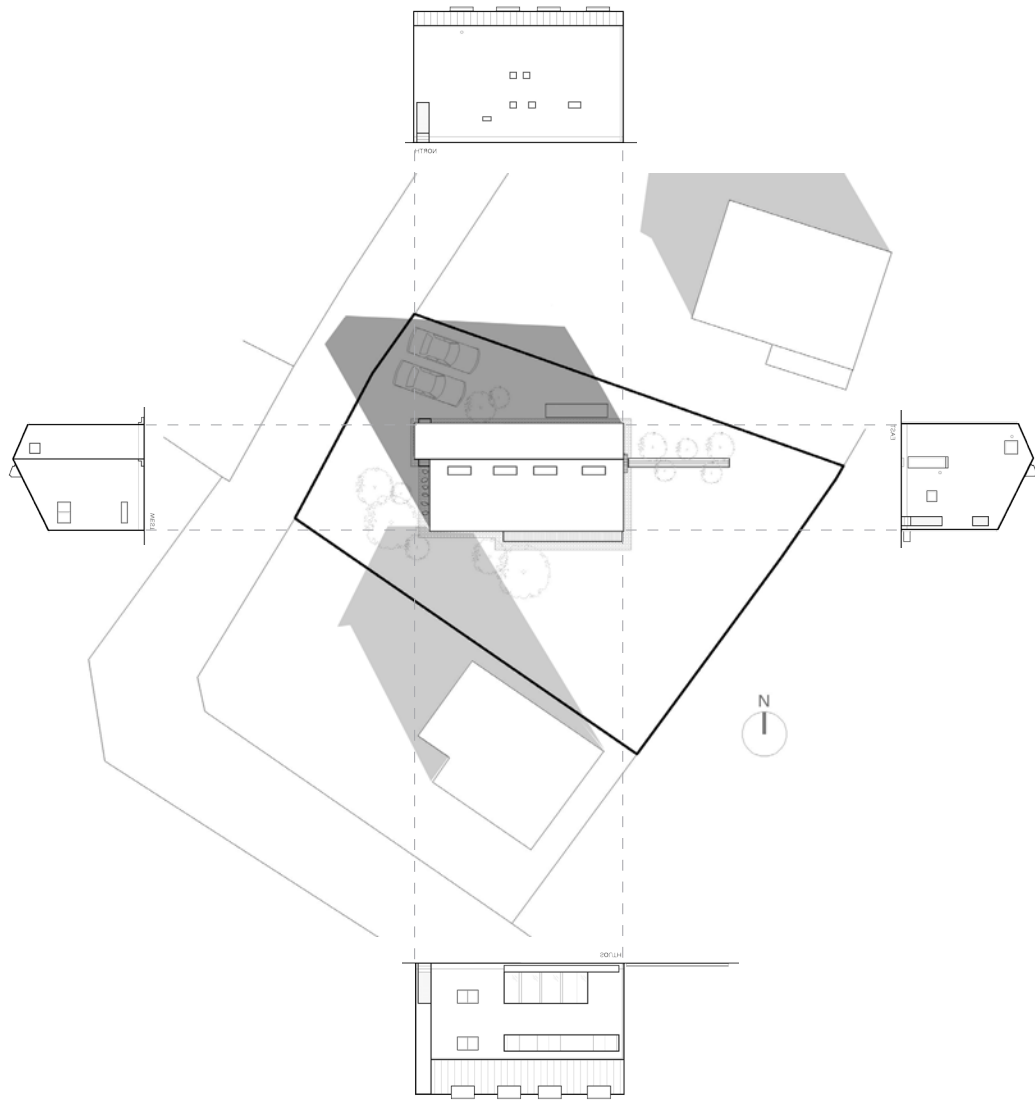


HOUSE K

Gunma, Japan





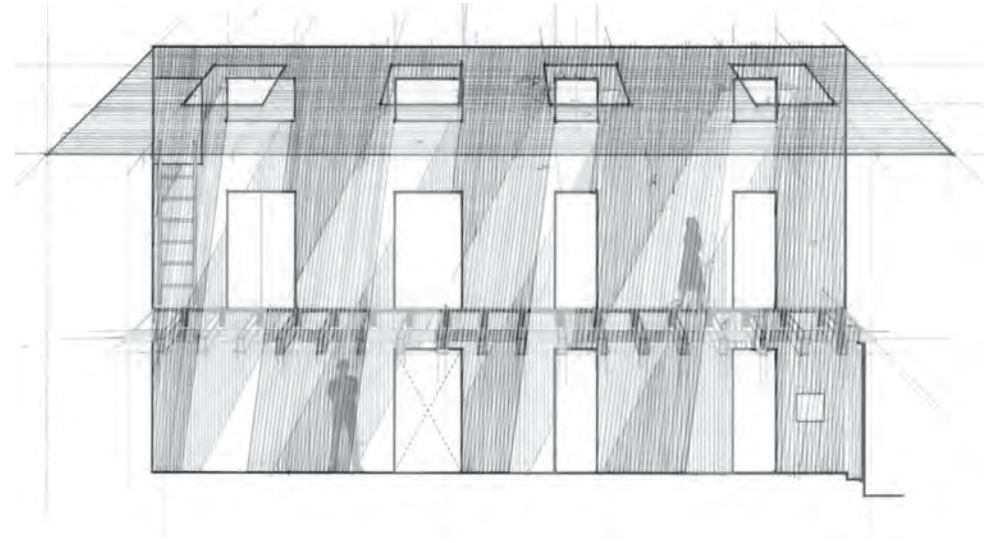
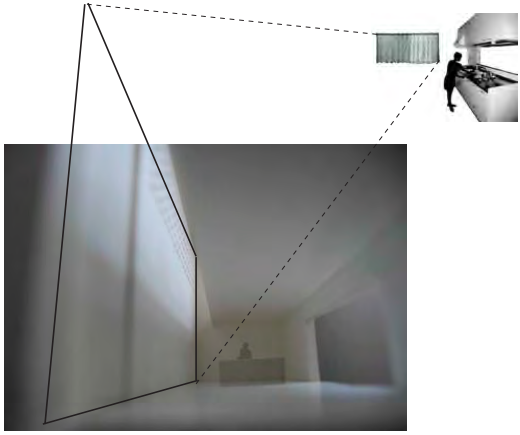


Located in the outskirts of Maebashi City in Gunma, Japan, House K is surrounded by agricultural fields with open views of distant mountains.

It is a residence for a family of four. The building is elongated on an east-west axis, allowing maximum south exposure and maximum open space for a home garden on the south side of the lot.



A continuous two-and-a-half-story wall bisects the building into north and south volumes, creating a gap between them. Light from the skylights falls in this gap and slowly moves through the interior surfaces as time passes during the day. The fluctuating pattern of the light is reminiscent of the phenomenon when light penetrates through the curtain the family loved in their old apartment.

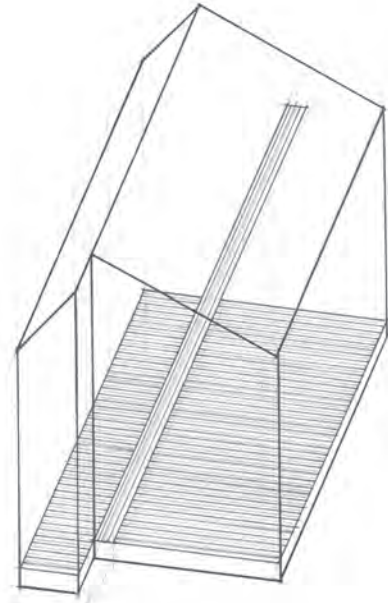
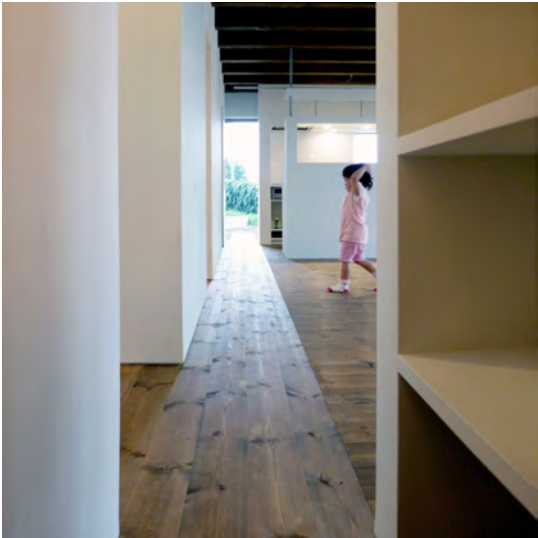


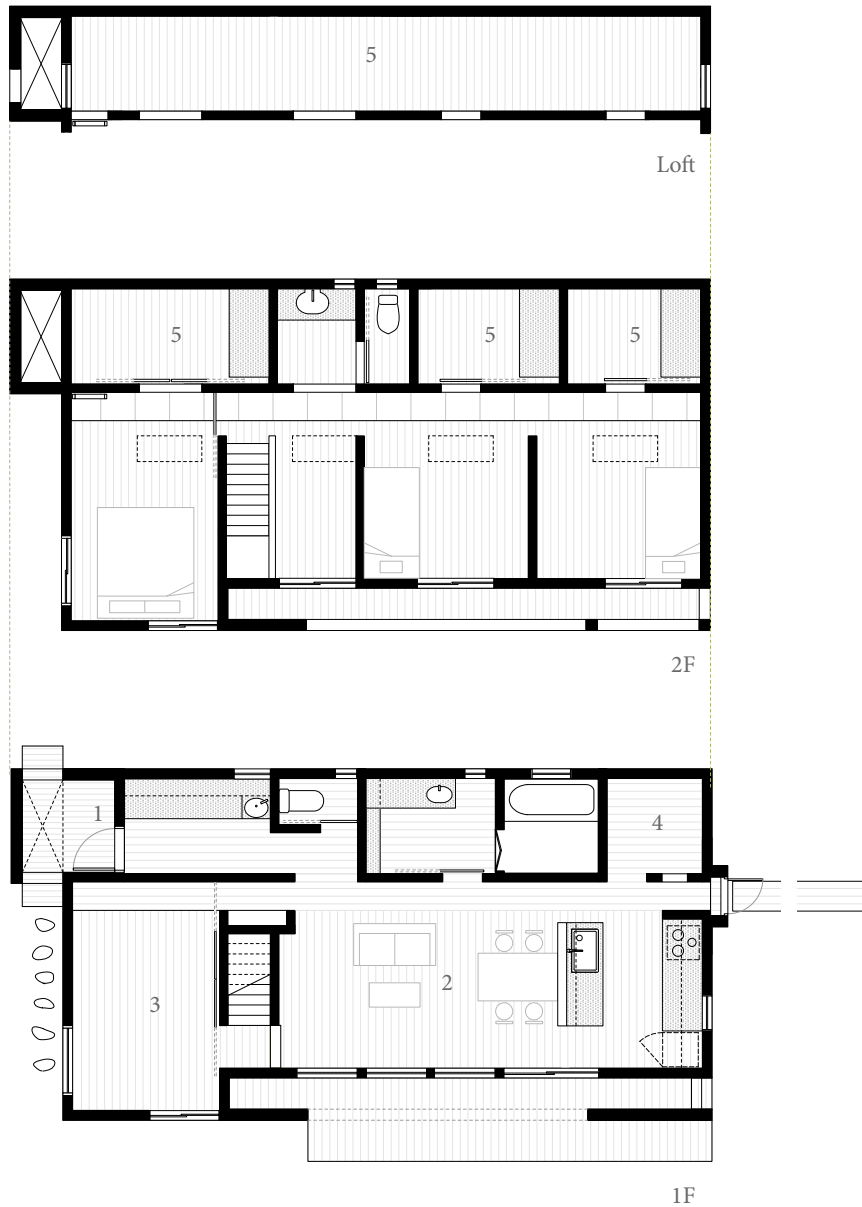




The glass floor above connects the spaces between the two levels, maintaining visual continuity throughout the entire height of the two-and-a-half-story wall.

Below the glass is a long narrow corridor on the first floor, which is expressed by changing the floorboards' direction. This narrow corridor extends out to the exterior and becomes an outdoor platform for sitting and enjoying the view of the vegetable garden.

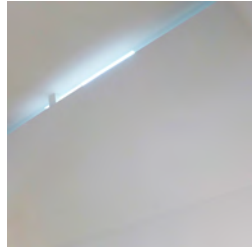
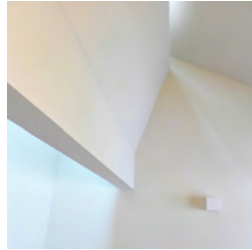
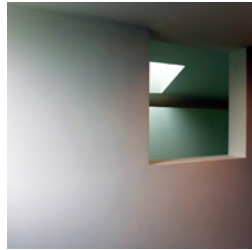
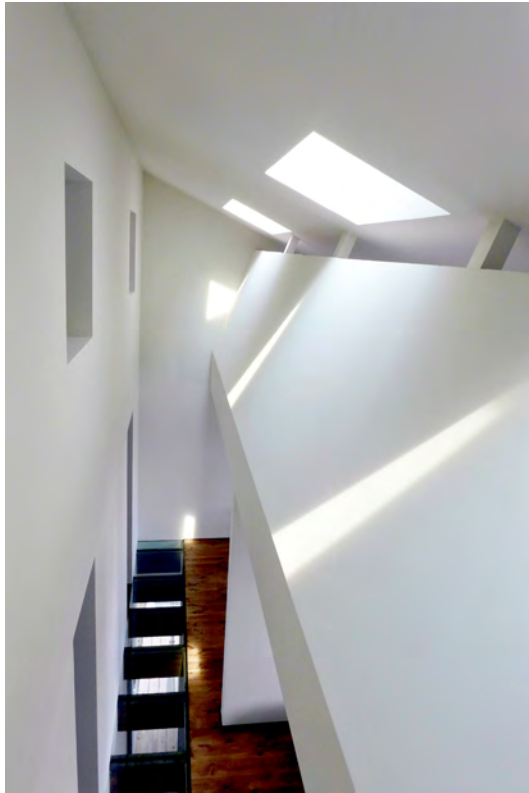




The south zone of the building houses all the occupiable spaces, including the kitchen and living and individual rooms. The north zone, on the other hand, houses the storage space and service areas. It also functions as a buffer to protect the occupied spaces from direct exposure to the cold north.

Isolation of free-standing storage cabinets and objects from the occupiable spaces by providing larger-than-normal storage rooms was an inexpensive anti-disaster strategy for the family after experiencing the Great East Japan Tsunami and Earthquake in 2011. Considering that the major cause of casualties during earthquakes is getting crushed by fallen furniture, a simple approach as this can help minimize such risk.

- 1: Entrance
- 2: Living-Kitchen-Dining
- 3: Guest
- 4: Pantry
- 5: Storage



[ Project Team ]  
Junko Yamamoto

*Drawings, Graphics & Photographs*  
Junko Yamamoto

*Booklet*  
iVY (<https://www.ivydesign.associates>)

*Contact*  
iVY Design Associates  
email: [info@ivydesign.associates](mailto:info@ivydesign.associates)  
<https://www.ivydesign.associates>

 @ivydesignassociates



